

# Creative Ideas Pack



Amazing outdoor spaces

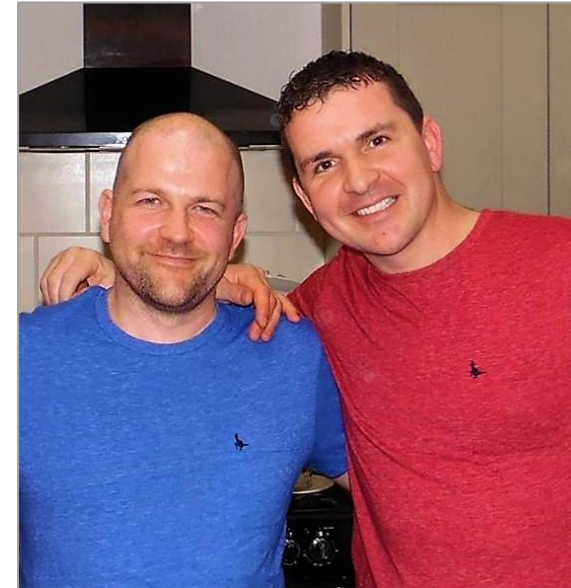
# A local, family business

**Wilson Paving & Landscaping** is run by two brothers, born and raised in Teesside.

Paul is our Landscaping Director and has over 25 years experience. He loves to create amazing outdoor spaces and experiences for people to enjoy, while meeting the extremely high standards he sets himself and the team. Paul lives in Billingham with his wife and two children.

Darren is our Design Director. He gets a kick out of problem solving and taking your ideas to create visually representative models of your garden and working with you to meet your expectations and more. Darren currently lives in Seaton Carew with his wife and their daughter..

Working alongside the family is a dedicated and highly skilled team, who we train and support to be the best that they can be.



## Our Values

- An **innovative** company with old-fashioned service values, we value the **personal touch** with every step
- We take **time to listen and understand** what you are looking to achieve and then help to realise that
- With a **wealth of experience** in the team, you can rely on Wilson Paving & Landscaping
- We appreciate that by hiring us you are **making an investment**, so we use only **quality materials** and ensure your installation is **built to last**
- With a **minimum 5 year guarantee** on all garden & driveway installations **you can sleep well** at night
- Our **highly trained team** take pride in delivering outstanding workmanship - **we won't rest unless you're happy**
- It can be stressful having people around your home so we do **everything we can to minimise disruption** and fit in **around you and your family**
- We value every project so we offer an **excellent after-care service** to ensure your space always looks its best
- We have a business **built on recommendation and customer satisfaction** and look forward to hearing from you

# Our Design Process

## 1 Consultation

## 2 Design

## 3 Install

## 4 After Care

- Before starting, we will arrange with you to have an initial consultation
- This is to discuss your ideas, wish list, budget and any specific requirements or limitations to the design of your outside space.
- We will also take detailed measurements and survey the space during the consultation
- We take time to listen and answer any questions that you may have
- There is no charge for this initial consultation

# Our Design Process

## 1 Consultation

## 2 Design

## 3 Install

## 4 After Care

- Following consultation we'll create a design concept for your outside space
- We will look to suggest high quality landscaping materials and planting plan as appropriate
- We'll arrange a follow up to present the design and discuss any changes
- There is no obligation and we can also discuss a staged installation if that better suits your needs

# Our Design Process

## 1 Consultation

## 2 Design

## 3 Install

## 4 After Care

- We take pride in each and every garden installation we undertake
- We build for the long term by using quality materials and a skilled workmanship
- Communication is important to us and will regularly update you and answer any questions you may have
- We encourage you to be involved if that is what you would like
- Disruption to your daily life and routine will be minimised as best as possible during installation

# Our Design Process

## 1 Consultation

## 2 Design

## 3 Install

## 4 After Care

- We want you to relax and enjoy your new outside space for many years to come
- We provide a minimum 5 year guarantee on all driveways and paving that we install so you can sleep well at night with full confidence
- Depending on choice of materials, this is often longer
- Each package is tailored to your individual needs and lifestyle

# Our Bespoke Garden Design Service

Sometimes, you just need to see a picture of what we suggesting.

Darren is our designer and is able to create representative models to help you see what we can create for you.

In the early stages, if your garden has different areas, it is often helpful to discuss ideas and tweak the design such as by moving content and changing materials so you are completely happy and satisfied.



Design meetings are done by Zoom call. This is really not as difficult as it sounds and we will support you so that you can access this service.

We tend to use designs for our more complex gardens and you will be offered this as your quote progresses.

If we do not mention the service, but you would like it, please do not hesitate to ask!



# Rendered Walls / Planters

A contemporary way to create borders or functional spaces

Increasingly popular, rendered walls can be applied in a variety of scenarios.

From simple borders to planting areas to seating around a focal point such as a fire pit.

Render comes in a variety of different colours and textures.

Walls can be built to be linear or with curves to allow freedom for us to create bespoke executions that are unique, just for you.



## Qualities

- [[ Bespoke design
- [[ Contemporary
- [[ Multi-functional
- [[ Choice of colours
- [[ Durable
  
- [[ **10 year guarantee** for peace of mind

# Tiled Walls / Planters

An opulent way to create borders or functional spaces

More recently, we have been asked to build walls which are then clad in tiles.

They provide an opulent look to a space and can be placed on walls or indeed planters.

We can use the same tiles as other areas of the garden to maintain consistency.

Or we can look to apply a contrast tile to create an opulent focal point in the garden.



## Qualities

- [[ Bespoke design
- [[ Contemporary
- [[ Multi-functional
- [[ Choice of colours
- [[ Durable
  
- [[ **10 year guarantee** for peace of mind

# Block Paved Driveway

A practical and effective answer to providing parking space for your property

Block paved driveways are a great way to add kerb appeal to your property and add functional space to park vehicles.

We traditionally use and recommend Tegula blocks for our block paved driveways.

However, we have installed driveways using a variety of blocks so if you have something in particular in mind, please let us know and we will quote with this in mind.



## Qualities

- || Aesthetically pleasing
- || Extremely durable
- || Reliable
- || Easy to repair
  
- || **5 year guarantee** for peace of mind

# Block Paved Driveway

A practical and effective answer to providing parking space for your property



## Tegula

Traditional styling



Bracken



Brindle



Cedar



Charcoal



Golden



Heather



Natural



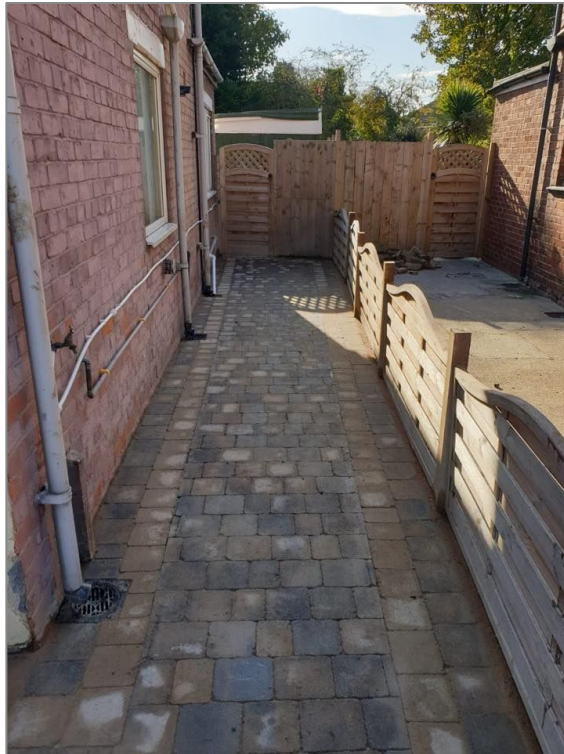
Slate

# Block Paved Pathway

A practical and effective pathway for your property

We can create pathways in a variety of materials but it's just worth mentioning how a block paved pathway can complement your block paved driveway.

Once again, we use block paving from Tobermore so you know that you will get a high quality finish for your side pathway.



## Qualities

- || Aesthetically pleasing
- || Extremely durable
- || Reliable
- || Easy to repair
  
- || **5 year guarantee** for peace of mind

# Porcelain Paving

## A luxurious choice for your patio

The porcelain we use and recommend comes from a couple of trusted suppliers we've used for many years.

The tiles come in a range of colours and sizes and are perfectly straight with precise 90 degree corners.

They are produced to a high quality and have a consistent body finish.

However, if you have a specific type of porcelain in mind, please just let us know.



### Qualities

- [[ Premium
- [[ Modern
- [[ Extremely hard wearing
- [[ Perfect for outside use
- [[ Anti-slip
- [[ Non-porous
  
- [[ **10 year guarantee** for peace of mind

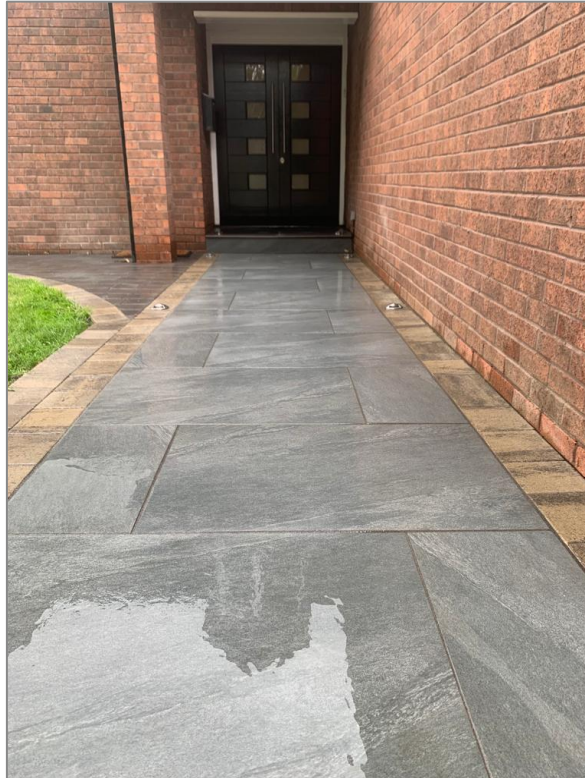
# Porcelain Pathway

A luxurious choice for your property entrance

We can install porcelain tiles in a number of scenarios and designs.

As well as patios, we can create luxurious pathways, seating areas on walls.

We are only limited by our own creativity!



## Qualities

- [[ Premium
- [[ Modern
- [[ Extremely hard wearing
- [[ Perfect for outside use
- [[ Anti-slip
- [[ Non-porous
  
- [[ **10 year guarantee** for peace of mind

# Paved Circle with Block Edge

A spot of luxury to add an extra dimension

Using circles in gardens can add a feeling of width and interest to a rectangular plot.

They are an effective way of adding zones within a larger patio area as circles can help to add focus without taking attention away from what is placed on top of them.

Circles and curves, in porcelain or sandstone are very popular at the moment, especially when wrapped in a block edge.



## Qualities

- [[ Adds a focal point
- [[ Creates width
- [[ Perfect for outside use
- [[ Modern
- [[ Different material options
- [[ Contrast colours
- [[ **10 year guarantee** for peace of mind (Porcelain)
- [[ **5 year guarantee** for peace of mind (Sandstone)



# Porcelain Paved Step

A solution to different levels in your garden

If your garden is tiered, with different levels, we can use porcelain steps to bridge the gap between your patio and your lawn.

Porcelain steps are also useful if your patio is a little too far down from your door and you would like less of a drop as you leave the house.

Steps can be in matching or contrasting colours, with risers cladded and edges bullnosed too - it's your own personal choice.



## Qualities

- [[ Premium
- [[ Modern
- [[ Extremely hard wearing
- [[ Perfect for outside use
- [[ Anti-slip
- [[ Non-porous
  
- [[ **10 year guarantee** for peace of mind

# Porcelain Pathway / Stepping Stones

A luxurious choice for connecting the unique spaces in your garden

Pathways link separate areas within your garden and also allows grass to stay healthier with less traffic across it.

The pathway can be simple or complex and can match or complement other colours in your design.

This is another way to accentuate your outdoor space and add an extra level of individuality to your garden.



## Qualities

- [[ Premium
- [[ Modern
- [[ Extremely hard wearing
- [[ Perfect for outside use
- [[ Anti-slip
- [[ Non-porous
  
- [[ **10 year guarantee** for peace of mind

# Sandstone Paving

A tried and tested choice for outside patio space

Classy, understated and sophisticated, the natural sandstone we use and recommend comes in a range of colours and sizes that give an air of exclusivity.

If you have a particular sandstone in mind for your patio, please let us know and we will quote for exactly what you would like.

We can also install sandstone steps to match or contrast.



## Qualities

- [[ Premium
- [[ Practical
- [[ Functional
- [[ Textured, non slip finish
- [[ Extremely hard wearing
- [[ Perfect for outside use
  
- [[ **5 year guarantee** for peace of mind

# Composite Gates & Fencing

## An elegant, premium and long lasting fencing choice

Composite materials are the popular, modern alternative to more natural materials.

Composite last longer than their timber equivalents and can last on average between 25 to 30 years.

They also require minimal upkeep.

The composite decking we use and recommend comes in a range of colours for you to choose from.



### Qualities

- [[ Premium finish
- [[ Easy care
- [[ Aesthetics that last
- [[ No costly yearly maintenance
- [[ Water resistant
  
- [[ **10 year guarantee** for peace of mind

# Composite Decking

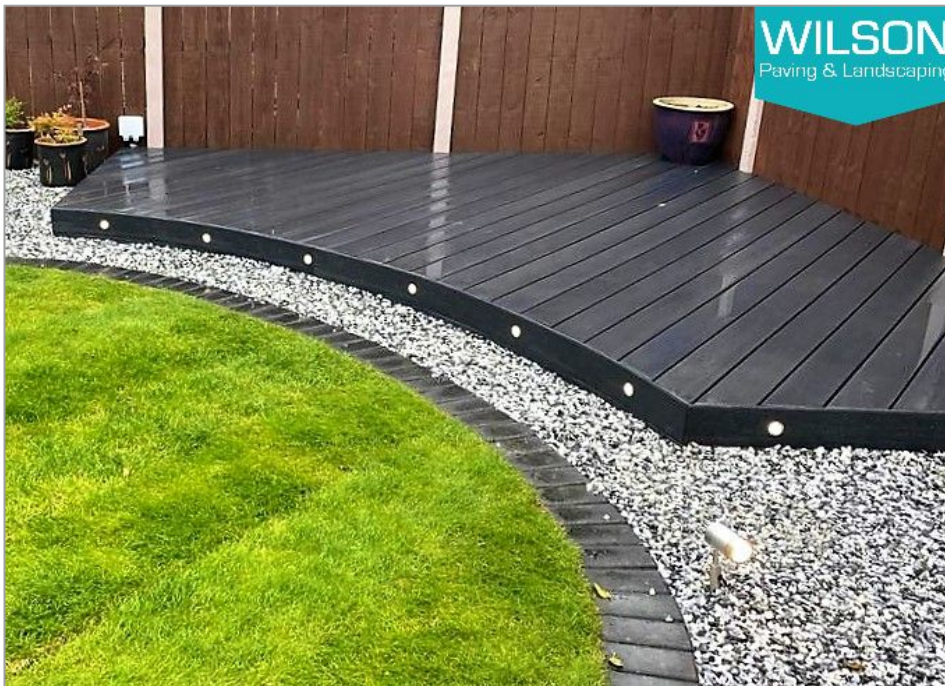
An elegant, premium and long lasting decking choice

Composite decking is the popular, modern alternative to timber decking.

Composite decks do not rot and last longer than their timber equivalents.

Composite decking requires minimal upkeep and can last on average between 25 to 30 years.

The composite decking we use and recommend comes in a range of colours.



## Qualities

- [[ Premium finish
- [[ Easy care
- [[ Superior slip resistance
- [[ Aesthetics that last
- [[ No costly yearly maintenance
- [[ Water resistant
- [[ **10 year guarantee** for peace of mind

# TREX Composite Decking

An elegant, premium and long lasting decking choice

Composite decking is our most premium and popular option

This product does not rot and last longer than the timber equivalent.

It requires minimal upkeep and can last on average between 25- 30 years, requiring no sanding, staining or painting.

TREX use innovative materials and process to be a greener product.



## Qualities

- [[ Premium finish
- [[ Low maintenance
- [[ Fade, stain, scratch & mould resistant
- [[ Aesthetics that last
- [[ Green material
- [[ Water resistant
  
- [[ **10 year guarantee** for peace of mind

# Composite Decking with Lighting

An elegant, premium and long-lasting choice for your deck

We are able to add lighting to your deck so that you are able to use it at all hours of the day.

Lighting on a deck can also give focus to other areas of your garden in the evening and add extra dimension and colour.

Lighting adds an extra air of understated luxury to your new garden and comes in so many different options.



## Qualities

- [[ Premium finish
- [[ Easy care
- [[ Superior slip resistance
- [[ Aesthetics that last
- [[ No costly yearly maintenance
- [[ Water resistant
  
- [[ **10 year guarantee** for peace of mind

# Timber Decking

A traditional and elegant decking choice

Timber decking has a natural elegance and is still extremely popular.

Wood can be cut to any shape and size so is extremely flexible to create any design that you are after.

We can use a variety of wood, in different colours and properties according to your budget and to match other things in your garden.



## Qualities

- [[ Flexible
- [[ Durable
- [[ Economical
- [[ Natural looking
- [[ Can be painted a range of different colours
- [[ **5 year guarantee** for peace of mind



# Close Board Panel Fencing

Stylish, modern durable fencing, providing security & privacy from surroundings

Closeboard fencing is popular for its strength, versatility, and simple, timeless appearance.

It is often described as one of the most cost effective types of fencing due to the solid timber posts, rails and caps on offer,

When quality materials are used, they provide real value for money over the lifetime of the fence.

Lighting can also be added for an extra dimension.



## Qualities

- || Strong
- || Versatile
- || Simple
- || Privacy
- || Classic Appearance
- || Natural looking
- || Can be painted a range of different colours
  
- || **5 year guarantee** for peace of mind

# Contemporary Fencing

Stylish, modern durable fencing, providing security & privacy from surroundings

Cedar wood is ideal for standing the test of time. With natural variation and graining in the wood, no piece is identical, allowing the beauty of the natural wood to shine through.

After time, cedar wood will weather to a beautiful silver-grey colour, with dark streaks.

If you would prefer for the fencing to retain its original colour, then the wood can also be treated to seal the colour.



## Qualities

- [[ Modern
- [[ Cedar Wood
- [[ Lightweight
- [[ Stable
- [[ Naturally resistant to rotting, splitting & warping
- [[ Sustainable
- [[ Perfect for outside use
- [[ **10 year guarantee** for peace of mind

# Composite Fencing

An elegant, premium and long lasting fencing choice

Composite materials are the popular, modern alternative to more natural materials.

Composite last longer than their timber equivalents and can last on average between 25 to 30 years.

They also require minimal upkeep.

The composite decking we use and recommend comes in a range of colours.



## Qualities

- [[ Premium finish
- [[ Easy care
- [[ Aesthetics that last
- [[ No costly yearly maintenance
- [[ Water resistant
  
- [[ **10 year guarantee** for peace of mind

# Timber Pergola

A traditional elegant way to create a focal point, with privacy & shade as required

Add something different to create a focal point for your garden.

Our timber pergolas, using pressure treated timber, are bespoke and can be tailored to make best use of the space.

Whether you choose to use one of these pergolas to cover your hot tub or your garden furniture you won't be disappointed with the quality.

Add lighting to take your pergola to another level.



## Qualities

- [[ Premium
- [[ Natural
- [[ Extremely hard wearing
- [[ Weatherproof
- [[ Stylish
- [[ Bespoke

# Metallic Pergola

A modern alternative to create a focal point, privacy and shade as required

Aluminium Pergolas are a unique way to create a sheltered patio area. The sleek and stylish designs are fully weatherproof and available in a range of sizes and colours that work well in any garden.

Whether you choose to use one of these pergolas to cover your hot tub or your garden furniture you won't be disappointed..

Add wind protecting sides, powered roofs and lighting to take it even more luxurious.



## Qualities

- [[ Premium
  - [[ Modern
  - [[ Extremely hard wearing
  - [[ Weatherproof
  - [[ Stylish
  - [[ Ability to add blinds
- 
- [[ **We provide a manufacturer guarantee** for peace of mind

# Balustrades

An elegant way to provide safety on a raised area

Typically used on balconies, staircases, terraces or decking, balustrades are panels to provide a barrier.

They can be made from a number of materials, including wood, chrome and stainless steel & glass.

Their primary purpose is usually as a safety barrier, particularly for ponds and tiered patios.

However, balustrades are increasingly used to add sophistication and a contemporary style, both indoors and outdoors.



## Qualities

- [[ Aesthetic appeal
  - [[ Protective
  - [[ Durable
  - [[ Low maintenance
  - [[ Versatile
- 
- [[ **We provide a manufacturer guarantee** for peace of mind

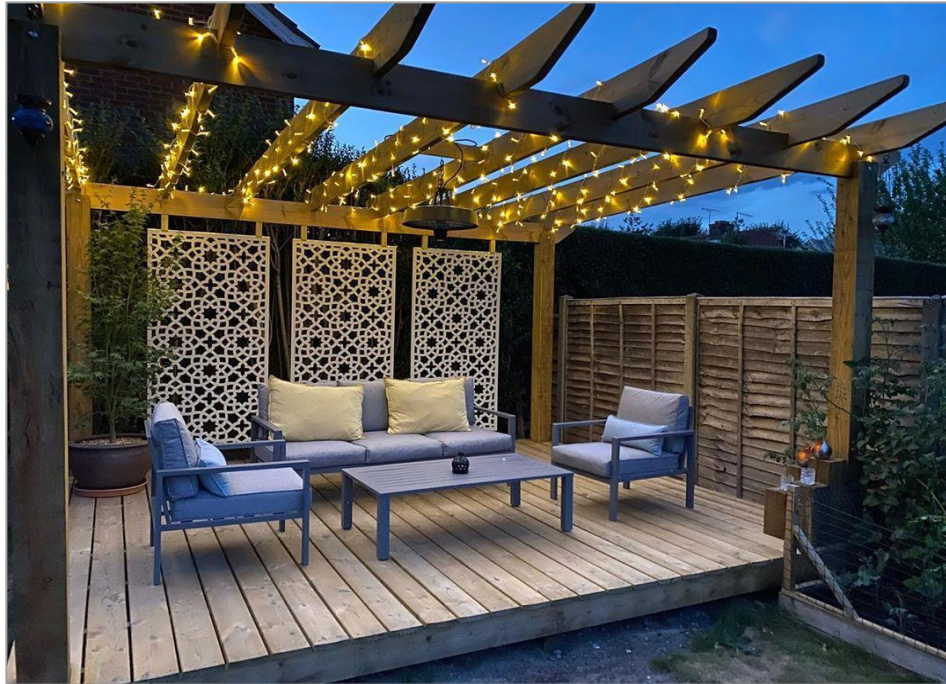
# Screening

A great way to make fencing more visually engaging

Screening is a relatively new concept and can be used in a variety of different ways to add interest to your garden, or a particularly unsightly space like a garage wall.

The screens come in many different patterns, sizes and colours and can help to zone areas within your garden or to give a little extra privacy around patios and hot tubs.

The panels can also be attached to walls and fences as art!



## Qualities

- [[ Do not warp
- [[ Do not age
- [[ Do not mould
- [[ Durable
- [[ Can be cut down to size
- [[ Perfect for outside use

# Artificial Grass

The perfect choice for a maintenance free lawn solution

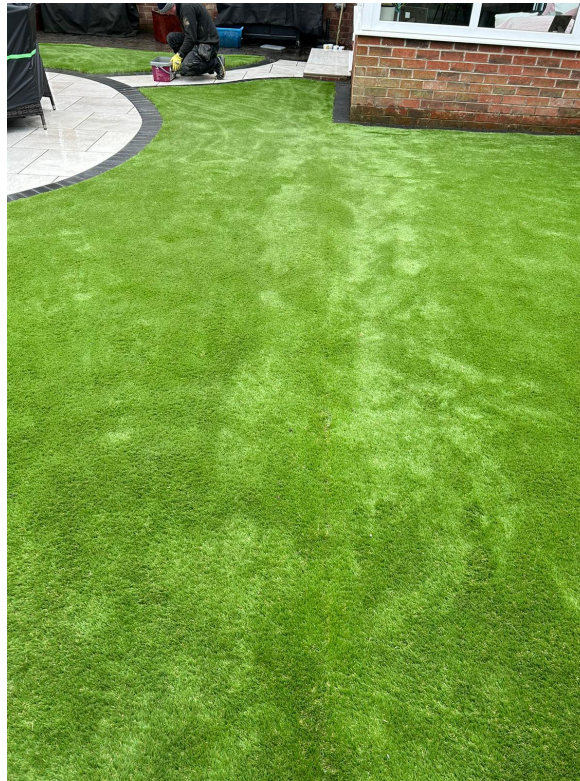
For some people, natural lawns can take a lot of upkeep to ensure that they look healthy and always look at their best.

Grass can also wear thin or go brown when walked on a lot, played on a lot or affected by weather.

Artificial grass is also useful for small awkward places when getting a mower can be difficult.

We can install artificial grass in your garden (or even just a part of it) to ensure a perfect green backdrop all year round.

At the end of their life, they can be recycled and replaced like a carpet.



## Qualities

- [[ Premium
- [[ Contemporary
- [[ Easy Maintenance
- [[ Durable
- [[ Soft
- [[ Remains green
- [[ Takes heavy wear
  
- [[ **10 year guarantee** for peace of mind



# Turf

A classic, natural lawn solution for your garden

There is perhaps nothing better than the smell of a freshly cut, natural lawn.

We use the highest quality turf, cultivated here in the North East, which makes it perfect for the gardens we install.

It is important not to overlook the quality of turf in gardens as it is the backdrop for everything else within it.

We always lay our turf on high quality soil to ensure the best conditions for the turf to thrive.



## Qualities

- || Traditional
- || Locally grown
- || Instant Result
- || Easy to shape
- || Soft for children and pets

# Circular Lawn with Block Paved Edge

A classic lawn solution

Many customers do not want a large expanse of lawn in their gardens and prefer hard landscaping. Turf (natural or artificial) is so versatile that we can insert areas of it as a feature for you.

This feature is really effective alongside porcelain circles and other curves in the garden.

A modern way of including a classic feature.



## Qualities

- || Premium
- || Contemporary
- || Pop of colour
- || Talking point
- || Focus for play or pets

# Planting Area

A visually pleasing and functional retaining wall with steps for easy access

We use only quality topsoil in our planting areas to give your plants the best environment and nutrients so that they can thrive.

Planting areas can be of different sizes and shapes throughout your garden.

We can provide planting or can leave them empty for you to fill as you wish.



## Qualities

- [[ Premium
- [[ Nutritious
- [[ Easy to shape
- [[ Easy Maintenance

# Block Paved Edge

Create harmony in your garden with premium block paved edging

We can use a variety of blocks to create an edge to lawned areas.

This creates a smooth line and helps to zone and separate areas. The materials used are high quality and can reflect the curves of your garden.

The blocks come in a range of shapes and colours so you can tie these in to other materials you use in your garden.



## Qualities

- || Aesthetically pleasing
- || Extremely durable
- || Reliable
- || Easy to repair
  
- || **5 year guarantee**  
for peace of mind

# Water Features

A contemporary solution for a relaxing garden feature

The sound of water helps many people to relax and adds an extra dimension to your garden.

Water features can be installed in a variety of ways and places to maximise their impact.

We can either give you ideas for water features or you can identify your own.

Either way, we are happy to include them in the design for you.



## Qualities

- || Range of colours
- || Range of styles
- || Range of prices
- || Helps to create a relaxing environment
- || Focal point

# Timber Sleeper Planters

A beautiful yet substantial planting solution

An alternative to planting areas is to use timber sleepers.

This can be done to create different heights of bed to give extra drama to your plants.

These are filled with premium top soil to ensure the best environment for your plants.

We can provide and plant these for you or we can leave them for you to fill yourself.



## Qualities

- [[ Premium
- [[ Traditional feel
- [[ Nutritious
- [[ Easy to shape
- [[ Planting at different heights
- [[ Focal Point
- [[ Easy Maintenance
  
- [[ **5 year guarantee** for peace of mind

# Recycled Plastic Sleeper Planters

A greener, long lasting solution

A modern, new alternative for sleepers is to use recycled plastic.

They are ideal for planting areas and for edging playgrounds, as foundations or substructures.

The material is robust and allows easy handling.

Made of recycled plastic, they are better for the environment and can be used wherever material strength, durability and safety are important.



## Qualities

- [[ Environmentally friendly
- [[ Strong
- [[ Durable
- [[ No maintenance
- [[ Extremely long lifetime
  
- [[ **10 year guarantee** for peace of mind

# Raised Kerb Planters

A contemporary solution for a planting focal point

An alternative to traditional planting areas is to use kerb stones to raise the space using kerbs.

This can be done to create different heights of bed to give extra drama to your plants and prevent spoiling.

These are filled with premium top soil and/or gravel to ensure the best environment for your plants.

We can provide and plant these for you or we can leave them for you to fill yourself.



## Qualities

- [[ Premium
- [[ Traditional feel
- [[ Easy to shape
- [[ Planting at different heights
- [[ Focal Point
- [[ Prevents spoiling
- [[ Easy Maintenance



# Wall & Steps

A visually pleasing and functional retaining wall with steps for easy access

We can build walls that have a purpose and walls just for interest.

We have done many jobs where we have installed curved walls to reflect curves in the garden.

These look particularly effective when rendered or are just beautiful left as they are.

Steps can be included and can also match materials used on patios.



## Qualities

- || Strong
- || Practical
- || Used as a feature
- || Helps to zone areas
- || Extremely hard wearing
- || Helps separate different levels in your garden
- || **10 year guarantee** for peace of mind

# Paved Wall Tops

Integrate your bricks walls into the garden design and an element of luxury

Take your brick walls to the next level by adding porcelain tiles to the top.

Using this method helps to better integrate your walls into the garden design and adds an element of luxury.

They look great and are also perfect for sitting on.

Our highly-skilled team will cut the tiles to match the curvature of the wall.

Match the tiles on your patio, or use a contrast tile, the choice is yours.



## Qualities

- [[ Premium
- [[ Modern
- [[ Extremely hard wearing
- [[ Perfect for outside use
- [[ Anti-slip
- [[ Non-porous
  
- [[ **10 year guarantee** for peace of mind

# Lighting

**Pockets to light around key focal points to add another dimension to your garden**

Good lighting installations makes such a difference to the feeling of a space.

Firstly, you can use your garden when it's dark.

Secondly, it is good from a security aspect.

Finally, it looks great from your sofa in the evening!

Lighting comes in so many different styles and the prices range massively.

We would be happy to discuss ideas with you to make the most of your space.



## Qualities

- [[ Range of colours
- [[ Range of styles
- [[ Range of prices
- [[ Adds a dimension when it's dark
- [[ Helps with security
- [[ Perfect for outside use

# Security Bollards

A robust, elegant solution to provide security for your property

These posts are designed to be extremely robust, and highly secure while having an elegant design that aligns perfectly with our premium driveways.

The posts are available in various materials, colours, sizes and configurations.

We can help find the bollard solution that is right for you.



## Qualities

- [[ Robust
- [[ Visually pleasing
- [[ High quality
- [[ Available in different colours and sizes
- [[ Can be automated
  
- [[ **1 year manufacturer guarantee** for peace of mind